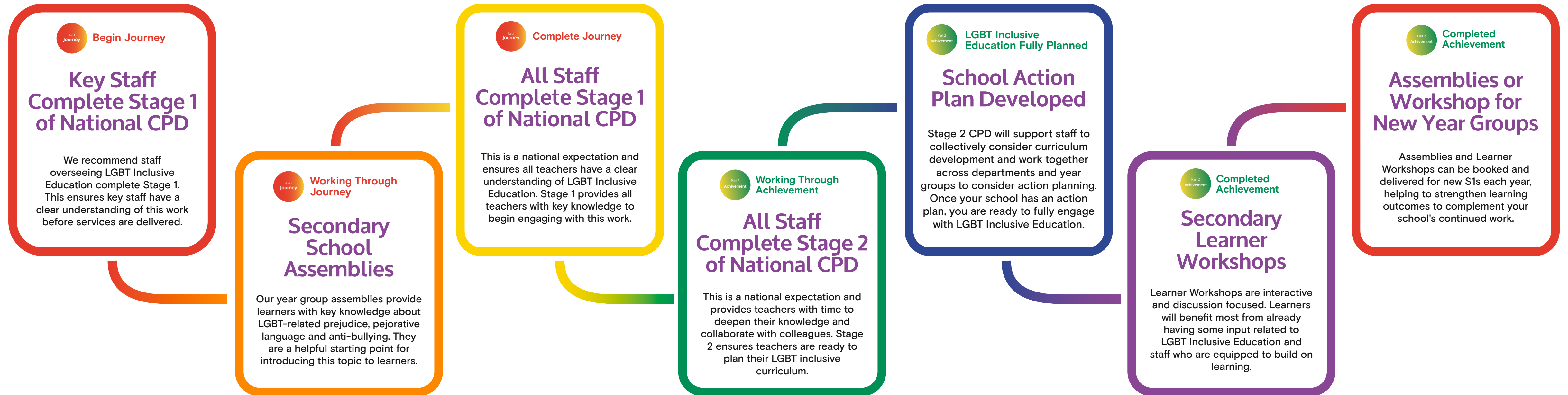


# The Recommended Pathway for Engaging with our Secondary Services

We recognise that schools engaging with us do so to address prejudice and improve outcomes for all learners. With our expertise and experience working in schools across Scotland, we have identified the following pathway as the most effective way to achieve meaningful impact. Engaging with these services in this order avoids 'one-off' approaches and ensures staff and learners have the necessary knowledge to sustain long-term change.



We have indicated where each step in our recommended service pathway may complement the national LGBT Inclusive Education Implementation & Evaluation Toolkit. This is available on [lgbteducation.scot/toolkit](https://lgbteducation.scot/toolkit)

